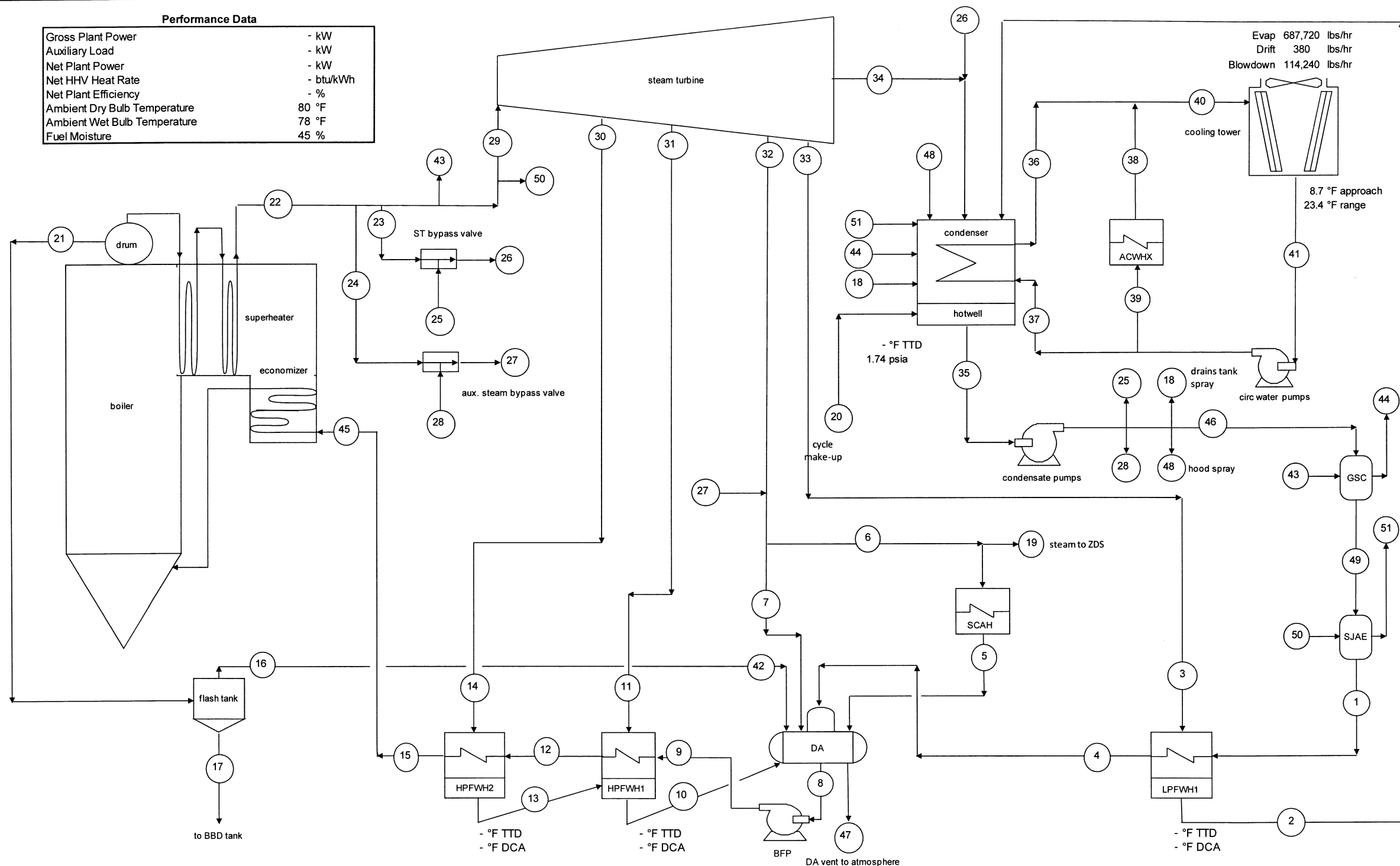


Performance Data

Gross Plant Power	- kW
Auxiliary Load	- kW
Net Plant Power	- kW
Net HHV Heat Rate	- btu/kWh
Net Plant Efficiency	- %
Ambient Dry Bulb Temperature	80 °F
Ambient Wet Bulb Temperature	78 °F
Fuel Moisture	45 %



Stream Data

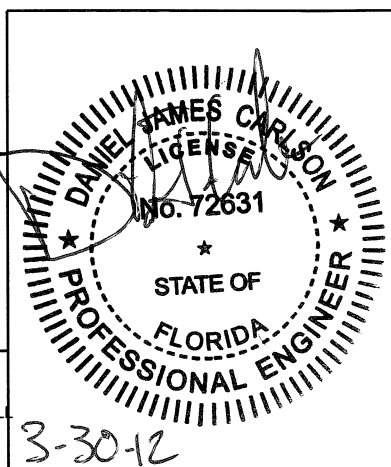
Stream #	Flow lb/hr	Temp. °F	Press. psia	Enthalpy btu/lb
1	587,601	123	350.00	92
2	0	-	-	-
3	0	-	-	-
4	587,601	123	350.00	92
5	17,000	293	60.00	263
6	19,000	340	60.00	1,203
7	97,489	336	52.60	1,202
8	704,549	284	52.60	254
9	704,549	288	2,235.00	262
10	0	-	-	-
11	0	-	-	-
12	704,548	288	2,235.00	262
13	0	-	-	-
14	0	-	-	-
15	704,547	288	2,235.00	262
16	3,008	286	54.00	1,176
17	4,037	286	54.00	255
18	1,000	121	350.00	90
19	2,000	340	60.00	1,203
20	6,587	60	30.00	28
21	7,045	621	1,800.00	648
22	697,500	1,005	1,634.00	1,490
23	603,564	1,000	1,590.00	1,488
24	92,761	1,000	1,590.00	1,488
25	143,103	121	350.00	90
26	746,666	401	150.00	1,220
27	116,489	340	60.00	1,203
28	23,728	121	350.00	90
29	0	-	-	-
30	0	-	-	-
31	0	-	-	-
32	0	-	-	-
33	0	-	-	-
34	0	-	-	-
35	825,428	120	1.74	88
36	36,000,000	112	40.83	80
37	36,000,000	88	50.00	56
38	2,000,000	103	50.00	71
39	2,000,000	88	50.00	56
40	38,000,000	111	40.83	79
41	38,000,000	88	14.60	56
42	3,008	285	52.60	1,176
43	440	436	14.20	1,257
44	440	210	14.20	178
45	704,547	289	1,876.00	262
46	587,601	121	350.00	90
47	550	284	52.60	1,175
48	70,000	121	350.00	90
49	587,601	122	350.00	90
50	735	436	14.20	1,257
51	735	210	14.20	178



ZACHRY

ZACHRY ENGINEERING CORPORATION - 1515 ARAPAHOE STREET, TOWER 1, SUITE 900, DENVER, CO 80202-4256
 FLORIDA BOARD OF PROFESSIONAL ENGINEERS CERTIFICATE OF AUTHORIZATION #26739
 AMARILLO, TX CHARLOTTE, NC HOUSTON, TX MINNEAPOLIS, MN OMAHA, NE SAN ANTONIO, TX

ZACHRY ENGINEERING CORPORATION (ZACHRY) RETAINS ALL RIGHT, TITLE AND INTEREST, IN AND TO ALL INFORMATION INCLUDING, BUT NOT LIMITED TO, ALL INTELLECTUAL PROPERTY DEVELOPED BY, OR ON BEHALF OF, ZACHRY. NEITHER THIS DRAWING, NOR ANY INFORMATION CONTAINED HEREIN, SHALL BE REPRODUCED, USED OR RELIED UPON FOR THE PREPARATION OF DRAWINGS OR APPARATUS, OR FOR ANY OTHER PURPOSE, EXCEPT AS EXPRESSLY AUTHORIZED IN WRITING BY ZACHRY.



0	ISSUED FOR CONSTRUCTION					
NO.	REVISION	DATE	DRWN	DSND	CHKD	CHKD

GAINESVILLE RENEWABLE ENERGY CENTER
 HEAT & MASS BALANCE
 TURBINE BYPASS DESIGN CASE

DRAWN M.L. PETERSEN	DESIGNED T. PFLIEGER	CHECKED F. ARMSTRONG	CHECKED D. CARLSON
APPROVED DM D. BISSON	DRAWING NUMBER B014200-CHBM00003	SHEET 01	REV 0
APPROVED PM T. SCHAPPA			